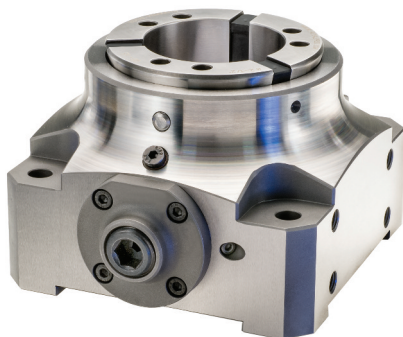
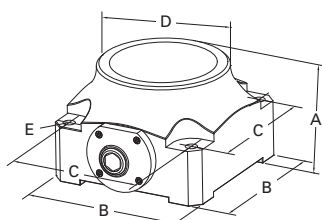


ROYAL QUICK-GRIP™ MANUAL COLLET FIXTURES FOR 4TH AND 5TH AXIS APPLICATIONS



- Unit is actuated via a hybrid mechanical/hydraulic mechanism.
- Can be used in both stationary and rotary table applications. **Caution – not for use on lathes or grinders above 5 rpm!**
- Many of the same great features as our Quick-Grip™ CNC Collet Chucks, including ten-second collet changes and parallel-grip collets with a full .062" clamping range.
- Pullback design with an internally threaded back plate enables the use of a stop rod.
- Bottom and all four sides are ground for both vertical and horizontal mounting.
- **Ideal for high production 4th and 5th axis applications.**
- For use with Royal Quick-Grip™ collets (pages 18-29).



Royal Quick-Grip™ Manual Collet Fixtures

MODEL	CAPACITY	A	B	C	D	E	PART NUMBER	PRICE*
QG-42	1.66"	3.94	5.12	3.94	3.94	0.43	43900	\$2,739
QG-65	2.66"	3.94	5.91	4.92	4.72	0.43	43904	2,904
QG-80	3.28"	4.33	6.50	5.31	5.31	0.51	43908	3,993
QG-100	4.03"	4.33	7.87	6.69	6.50	0.51	43912	4,312

*Collet not included – order separately.



ROYAL 5C, 16C, & 3J MANUAL COLLET FIXTURES



- Opened and closed via an internal cam mechanism.
- Accu-Length™ operation – collet and workpiece position remains fixed for precise length control.
- Can be used in both **stationary and rotary table applications**. **Caution – not for use on lathes or grinders above 5 rpm!**
- Special model 62004 bolts directly to Haas HRT-110* and other small indexers. **Note** – cam bolt is recessed on this model.
- All other models configured for both four and six-slot mounting – 4.125" bolt circle diameter.
- All models include cam wrench.

Royal 5C, 16C and 3J Manual Collet Fixtures

MODEL	CAPACITY	TYPE	A	B	C	D	E	F	PART NUMBER	PRICE
5C	1 ¹ / ₁₆ "	Type 1	3.37	2.50	4.95	3.50	1.15	0.75	62002	\$693
5C (for HRT-110)*	1 ¹ / ₁₆ "	Type 2	4.20	2.50	-	3.50	1.15	-	62004	725
16C	1 ⁵ / ₈ "	Type 2	4.95	3.35	-	4.63	1.50	-	62006	1,045
3J	1 ³ / ₄ "	Type 2	4.95	3.35	-	4.13	1.00	-	62008	1,045

*Haas and HRT-110 are registered trademarks of Haas Automation, Inc.

