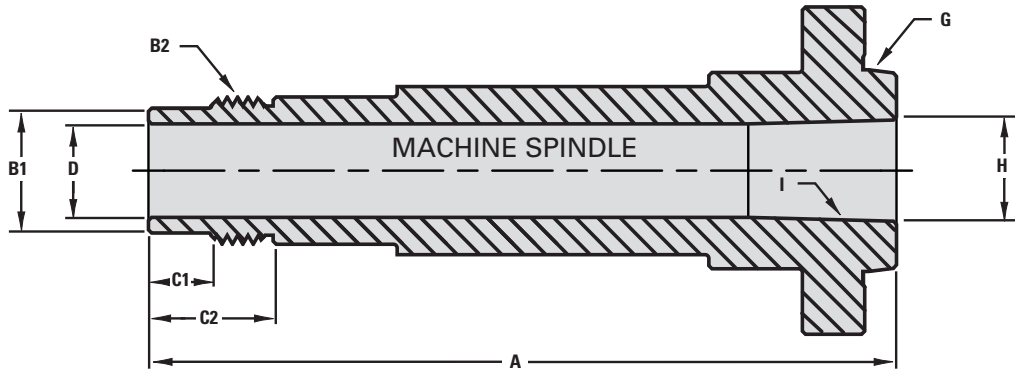


# COLLET CLOSER ORDERING SHEET

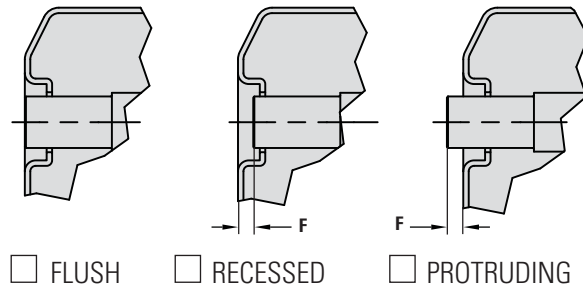
Because lathe spindle dimensions and guard configurations frequently vary, it may be necessary to complete this ordering sheet and submit it with your collet closer order. If you have any questions on how to obtain any of the required dimensions, please contact a Royal applications engineer at 1-800-645-4174.



Name of Machine: \_\_\_\_\_ Model: \_\_\_\_\_ Swing: \_\_\_\_\_

Customer Name: \_\_\_\_\_ Phone #: \_\_\_\_\_

- A  Overall length of lathe spindle to the nearest 1/32".
- B1  O.D. of rear of spindle to the nearest thousandth of an inch.
- B2  O.D. thread (if applicable). Specify major diameter, pitch, and right or left hand.
- C1  Length of diameter B1.
- C2  Distance from rear of spindle to end of thread.
- D  Spindle bore (1.375 min. to clear drawtube).
- F  Distance from the rear of the spindle to guard. **Fill in measurement and check type below.**



- G  Select spindle type: D1-3 D1-4 D1-5 D1-6 D1-8 A2-4 A2-5 A2-6 A2-8
- H  Gage line diameter of internal taper.
- I  Internal spindle taper (5MT, 6MT, 12 Jarno, etc.).