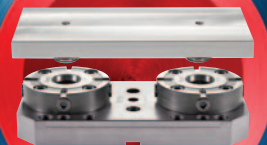
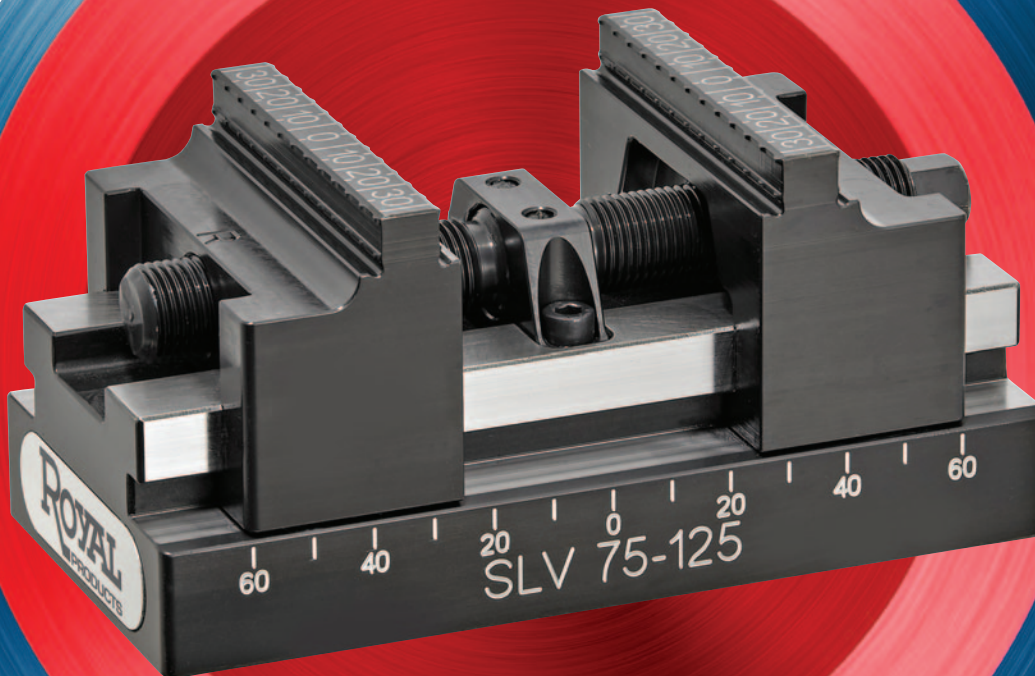




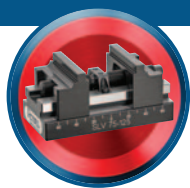
# WORKHOLDING FOR MACHINING CENTERS

**SLV™ – NEW SELF-CENTERING VISES WITH  
TREMENDOUS GRIP FORCE AND RIGIDITY**

**Z-LOCK™ – A ZERO-POINT WORKHOLDING  
SYSTEM WITHOUT ALL OF THE \$000'S**



**ROYAL**  
PRODUCTS  
Optimize everything.



# ROYAL SLV™ SELF-CENTERING VISES

## SLV → Sturdy Little Vise

### Superior Design

Outstanding performance over other self-centering vises is achieved through a combination of several unique design elements:

- ✓ Extremely rigid one-piece jaw design is modeled after a CNC box way to minimize deflection through captive, multi-plane contact. Jaw lift is virtually non-existent.
- ✓ The massive drive spindle is elevated to apply the clamping force much closer to the workpiece compared to other vises.
- ✓ The hardened vise body is machined from a proprietary tool steel for maximum strength and rigidity.

### Incredible Grip Force

The Royal SLV™ Self-Centering Vise has been optimized to deliver tremendous grip force and rigidity in a very compact package. This is one **Sturdy Little Vise!**

### Never Needs Realignment

The central guide bushing is both pinned and bolted to the vise body to maintain perfect alignment and eliminate any need for readjustment.

### Multiple Jaw Options

All Royal **Sturdy Little Vises** come equipped with a set of standard-grip jaws. Additional jaw models are available for more specialized applications.

### No More Cutting Dovetails

The Royal SLV™ securely grips workpieces at a depth of as little as 3mm (1/8"), reducing scrap and eliminating the need to cut dovetails or emboss the workpiece contact surface.

### Precision Repeatability

0.0006" or better repeatability – guaranteed.

### Great for 5-Axis

Mounting pyramids available for multi-vise setups – especially useful in five-axis applications.

### Reduced Chip Buildup

Shallow throat depth allows for easy and complete chip blow-off.

### Same-Day Shipping

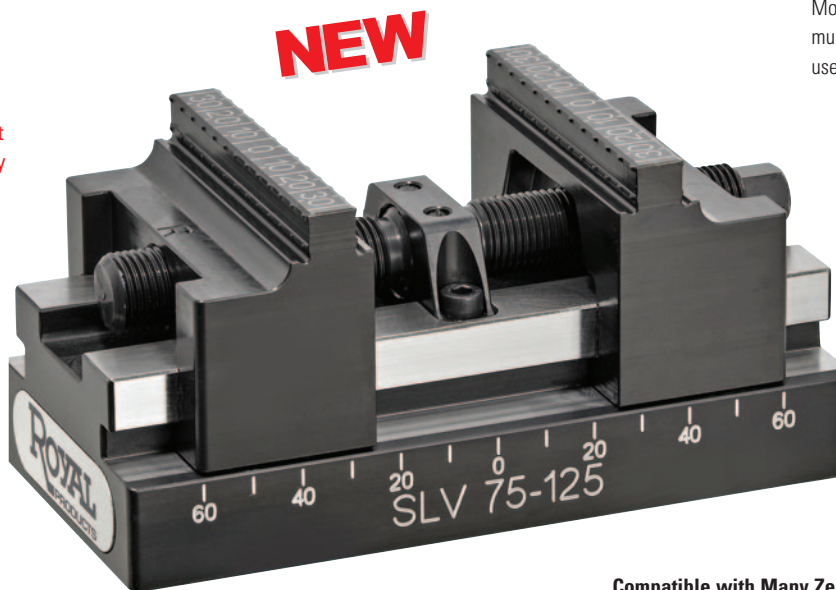
All vises, jaw sets, and pyramids are in stock for same-day shipping.

### Compatible with Many Zero-Point Receivers

The Royal SLV™ is also configured to accept the mounting studs of other zero-point systems based on common 52 and 96mm bolt patterns (see compatibility chart).

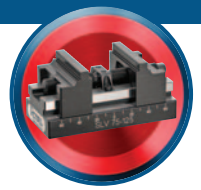
### Direct Integration with Royal Z-Lock™

The Royal SLV™ is the perfect complement to our Z-Lock™ Zero-Point Workholding System – each SLV™ vise contains a central tapped hole to accept our heavy-duty Z-Lock™ positioning stud).



**Never Let Your Workholding be the Limiting Factor in Your Machining Processes – Try a Royal SLV™ on Your Toughest Application RISK-FREE!**

# ROYAL SLV™ SELF-CENTERING VISES

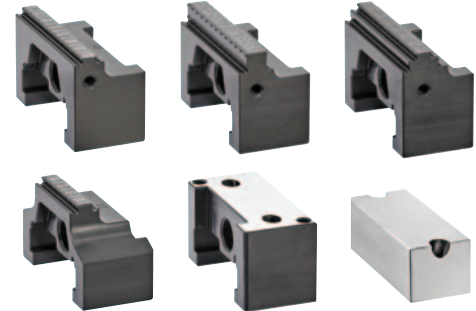


## Extreme Clamping Force



**Elevated Drive Spindle**  
applies tremendous clamping force because it is positioned much closer to the workpiece than other vises

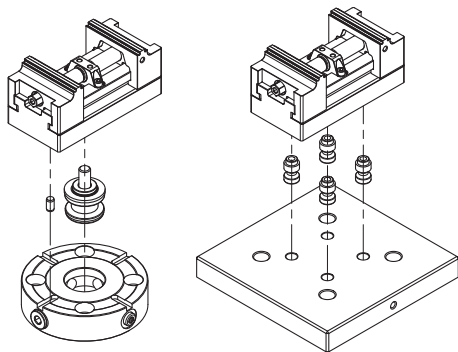
**Extremely Rigid Box Way**  
construction virtually eliminates jaw lift



Multiple Jaw Styles to Handle a Wide Range of Applications

## Universal Zero-Point Receiver Compatibility

- Royal SLV™ Vises have been designed for **compatibility with many popular zero-point quick-change receivers.**
- If you don't already own a zero-point system, it's hard to beat the Royal Z-Lock™ in terms of accuracy, rigidity, and cost. See page 78-81 for details.
- If you've already standardized on a zero-point system that utilizes 52 or 96mm square mounting patterns, you can still upgrade your vises to the Royal SLV™ and enjoy increased performance, productivity, and profits. Simply screw your studs right into the hardened vise base. See receiver compatibility chart below.



### Zero-Point Mounting Compatibility

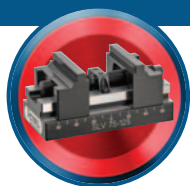
SLV™ VISE MODEL	ROYAL Z-LOCK™ (M12X1.75 STUD)	52 MM SQUARE PATTERN (M8X1.25 STUDS)	96 MM SQUARE PATTERN (M10X1.5 STUDS)
SLV 54-70	X	X	X
SLV 75-125	✓	✓	X
SLV 75-150	✓	✓	X
SLV 125-180	✓	✓	✓
SLV 125-230	✓	✓	✓

## Multi-Vise Pyramids Optimize 5-Axis Production



- With Royal Multi-Vise Pyramids, you can take advantage of 5-axis flexibility and **increase throughput by machining several parts in a single setup.**
- Model 66051 is made from aluminum, includes three SLV™ 54-70 vises, and is machined to accept three additional 54-70 vises (sold separately).
- Model 66052 is made from hardened steel and includes three SLV 75-125 vises.
- All vises are supplied with standard jaws.
- Removable lifting ring supplied for installation ease.

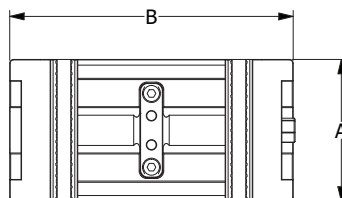
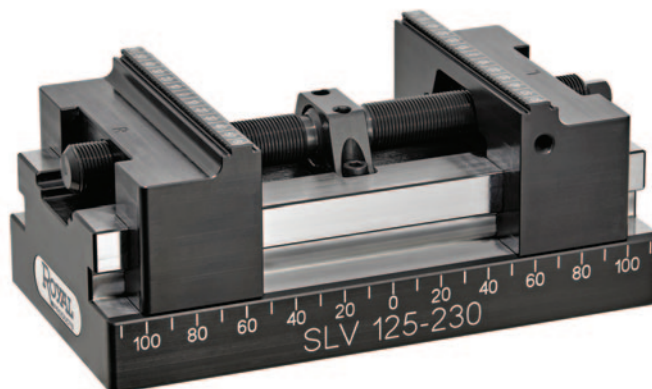
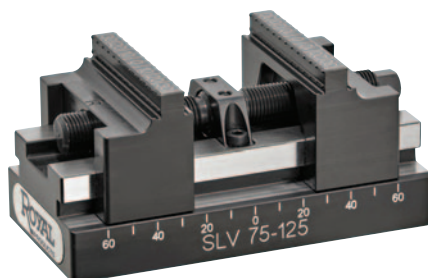




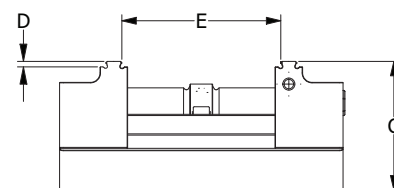
# ROYAL SLV™ SELF-CENTERING VISES

## Vise Models For All Applications

**NEW**



Top View



Side View

### Royal SLV™ Self-Centering Vises

SLV™ VISE MODEL	A BODY/JAW WIDTH	B BODY LENGTH	C HEIGHT WITH STANDARD JAWS	D CLAMPING DEPTH WITH STANDARD JAWS	E MIN/MAX CLAMPING RANGE	MAX TIGHTENING TORQUE (ft.-lbs.)	MAX CLAMPING FORCE (lbs.)	WEIGHT WITH STANDARD JAWS (lbs.)	PART NUMBER	PRICE**
SLV 54-70	2.13/1.57*	2.76	1.77	0.11	0.24-1.85	29	2,250	2	66000	\$1,065
SLV 75-125	2.95	4.92	2.68	0.11	0.24-4.01	52	3,600	8	66002	1,285
SLV 75-150	2.95	5.91	2.68	0.11	0.24-5.00	52	3,600	9	66004	1,330
SLV 125-180	4.92	7.09	3.62	0.11	0.24-6.06	73	5,850	26	66008	2,385
SLV 125-230	4.92	9.06	3.62	0.11	0.24-8.03	73	5,850	31	66010	2,560

\*For the model 54, please note that the jaw width is narrower than the body.

\*\* Price includes one set of standard jaws and wrenches.

Additional dimensional information available at [royalproducts.com](http://royalproducts.com)



66051



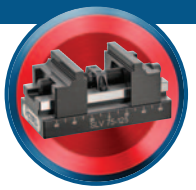
66052

### Royal SLV™ Multi-Visc Pyramids

FOR VISE MODEL	PYRAMID DIAMETER	COMBINED WEIGHT OF PYRAMID AND THREE VISES (lbs.)	PART NUMBER	PRICE*
SLV 54-70	8.4	20	66051	\$8,340
SLV 75-125	14.7	44	66052	7,240

\* Includes pyramid and three vises with standard jaws.

# ROYAL SLV™ SELF-CENTERING VISES



## Royal SLV™ Jaw Sets

### Royal SLV™ Standard-Grip Jaw Set

Included with Each Vise



FITS VISE MODEL	CLAMPING WIDTH	CLAMPING DEPTH	PART NUMBER	PRICE/SET
SLV 54	1.57	0.11	66020	<b>\$557</b>
SLV 75	2.95	0.11	66022	<b>651</b>
SLV 125	4.92	0.11	66024	<b>1,135</b>

### Royal SLV™ Double-Grip Jaw Set

Increased Clamping Depth and a Second Row of Serrations for Very Aggressive Machining



FITS VISE MODEL	CLAMPING WIDTH	CLAMPING DEPTH	PART NUMBER	PRICE/SET
SLV 75	2.95	0.35	66026	<b>\$798</b>
SLV 125	4.92	0.35	66028	<b>1,395</b>

### Royal SLV™ Combo Jaw Set

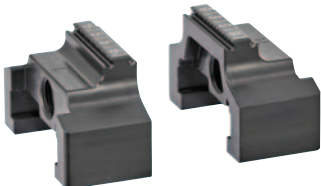
Both Serrated and Smooth Gripping Surfaces for Roughing and Finishing



FITS VISE MODEL	CLAMPING WIDTH	CLAMPING DEPTH	PART NUMBER	PRICE/SET
SLV 75	2.95	0.11/0.31	66034	<b>\$783</b>
SLV 125	4.92	0.11/0.42	66036	<b>1,240</b>

### Royal SLV™ Slim-Grip Jaw Set

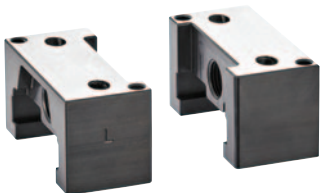
Extra Clearance for Narrow Workpieces



FITS VISE MODEL	CLAMPING WIDTH	CLAMPING DEPTH	PART NUMBER	PRICE/SET
SLV 75	1.73	0.11	66038	<b>\$707</b>

### Royal SLV™ Base Jaw Set

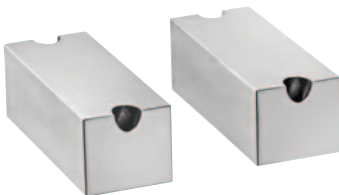
Use with Machinable Top Jaws



FITS VISE MODEL	CLAMPING WIDTH	CLAMPING DEPTH	PART NUMBER	PRICE/SET
SLV 75	2.95	N/A	66040	<b>\$683</b>
SLV 125	4.92	N/A	66042	<b>1,195</b>

### Royal SLV™ Machinable Aluminum Top Jaw Set

Use with Base Jaws



FITS VISE MODEL	CLAMPING WIDTH	CLAMPING DEPTH	PART NUMBER	PRICE/SET
SLV 75	2.95	0.9	66044	<b>\$171</b>
SLV 125	4.92	1.0	66046	<b>246</b>