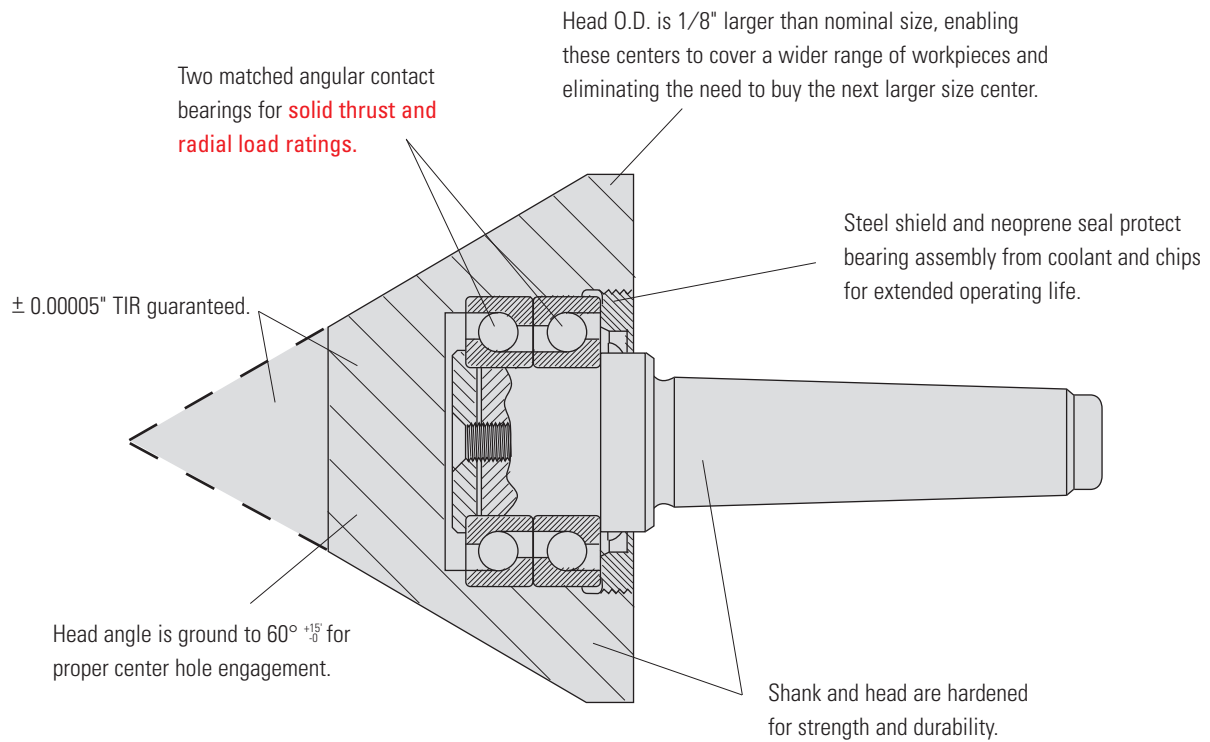


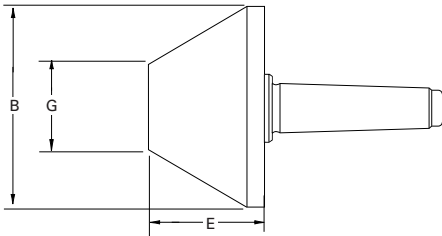
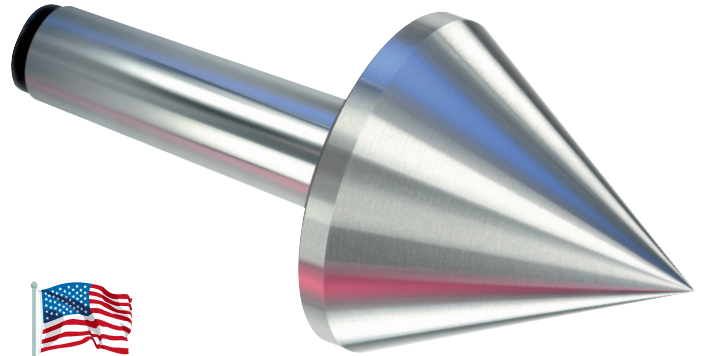
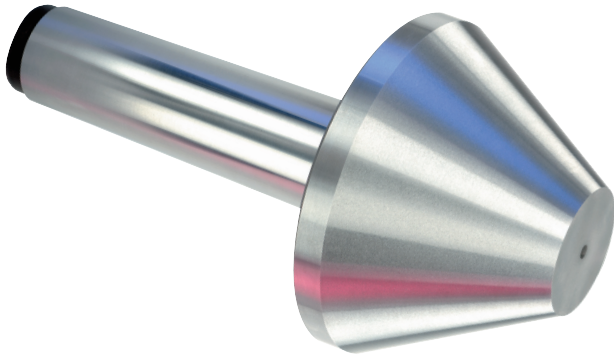


ROYAL STANDARD PIPE & BULL HEAD LIVE CENTERS



- ❑ Designed for turning pipes, tubes, and parts with extra-large center holes.
- ❑ Two matched angular contact bearings provide good thrust and radial load ratings.
- ❑ Head diameter is 1/8" over nominal size, enabling these centers to cover a wider range of workpieces.
- ❑ Bull Head design is shorter than a pipe head, reducing potential interference in blind center hole applications and ensuring that the **load is positioned over the bearings for optimum strength**.
- ❑ Extra large capacity models also available – see previous page.

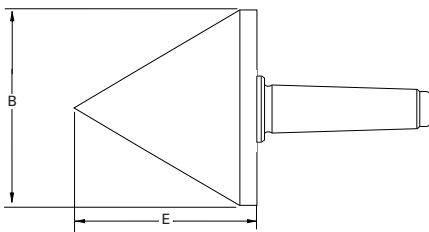
ROYAL STANDARD PIPE & BULL HEAD LIVE CENTERS



Royal Standard Bull Head Live Centers

TAPER	B	E	G	MAX. SUGGESTED RPM*	WEIGHT OF WORKPIECE (lbs.)	THRUST LOAD (lbs.)	PART NUMBER	PRICE
3 MT	3.15	2.52	1.00	5,000	615	1,780	10902	\$977
4 MT	4.15	3.01	1.25	4,500	860	2,550	10904	1,211
5 MT	4.15	3.01	1.25	4,500	860	2,550	10905	1,211
5 MT	5.15	3.17	2.00	4,000	1,145	3,450	10907	1,508
5 MT	6.15	3.60	2.50	3,500	1,450	4,500	10909	2,085

* Maximum recommended operating limit. Operating above this speed could result in heat build-up and accelerated bearing wear.



Royal Standard Pipe Head Live Centers

TAPER	B	E	MAX. SUGGESTED RPM*	WEIGHT OF WORKPIECE (lbs.)	THRUST LOAD (lbs.)	PART NUMBER	PRICE
3 MT	3.15	3.39	5,000	475	1,780	10702	\$994
4 MT	4.15	4.10	4,500	630	2,550	10704	1,127
5 MT	4.15	4.10	4,500	630	2,550	10705	1,127

* Maximum recommended operating limit. Operating above this speed could result in heat build-up and accelerated bearing wear.