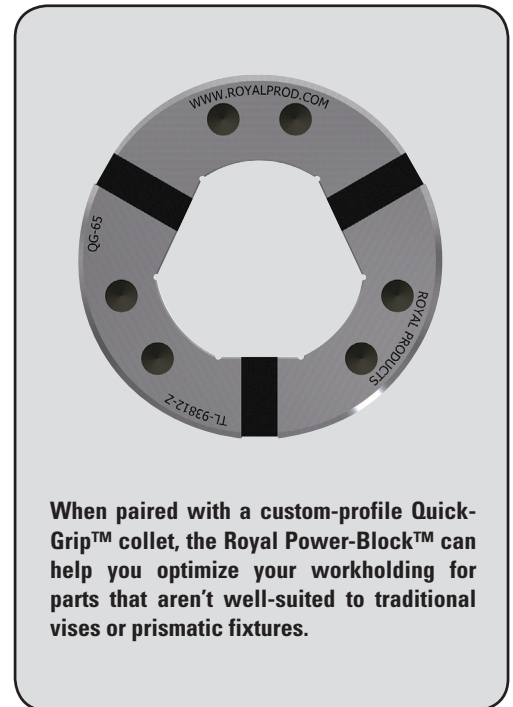
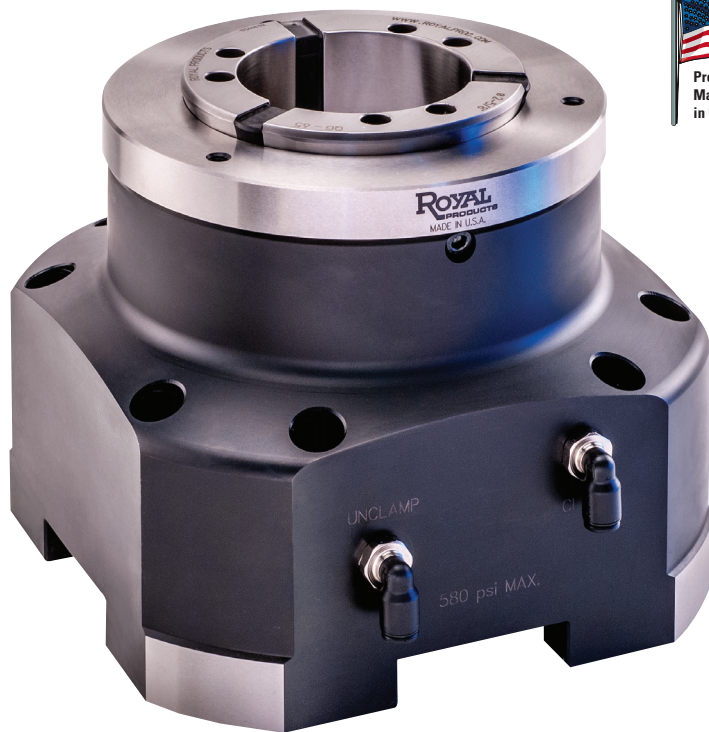


# ROYAL POWER-BLOCK™ HYDRAULIC COLLET FIXTURES



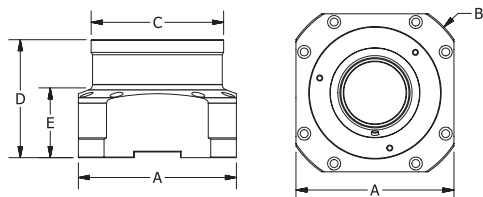
## All the Advantages of Quick-Grip™ Now Available for Vertical and Horizontal Machining Centers

- ✓ Royal Power-Block™ Collet Fixtures incorporate many of the same great features as our Quick-Grip™ CNC Collet Chucks, including ten-second collet changes and the use of parallel-grip collets with a full .062" clamping range.
- ✓ **A great alternative to traditional vises and fixtures** – especially for long, thin parts, or those with asymmetrical external features.
- ✓ While the units are designed to be actuated via hydraulic pressure, they can also be pneumatically-actuated for lighter-duty applications.
- ✓ Engineered for use in both stationary and rotary-table applications.
- ✓ Configured with both side and bottom ports for plumbing flexibility, with the ability to plumb multiple units in series for single-source actuation.
- ✓ **Ideal for high-production vertical and horizontal milling applications.**



[www.royalproducts.com](http://www.royalproducts.com)

# ROYAL POWER-BLOCK™ COLLET FIXTURES



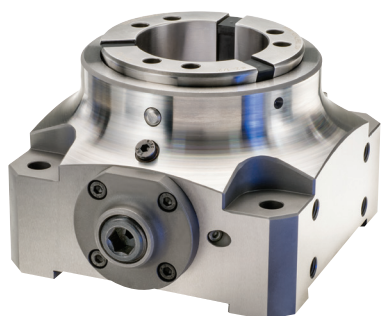
## Power-Block™ Grip Force Specifications

MODEL	MAX INPUT HYDRAULIC PRESSURE (psi.)	MAX AXIAL FORCE (lbs.)	MAX CLAMPING FORCE (lbs.)
QG-42	580	7,865	17,980
QG-65	580	10,115	23,600
QG-80	580	11,240	25,850
QG-100	580	14,610	33,720

## Royal Quick-Grip™ Power-Block™ Hydraulic Collet Fixtures

MODEL	CAPACITY		A (SQUARE)	B (OUTER DIA.)	C	D	E	PART NUMBER
	(ROUND)	(SQUARE)						
QG-42	1.66	1.16	6.06	6.89	4.92	4.72	3.18	43950
QG-65	2.66	1.78	6.85	8.27	5.75	5.12	3.00	43952
QG-80	3.28	2.03	7.34	8.46	6.30	5.12	3.00	43954
QG-100	4.03	2.78	9.02	10.63	8.46	5.51	3.38	43956

## More Great Workholding Solutions from Royal Products



**Manually-Actuated Quick-Grip™  
Collet Fixtures**



**Manually-Actuated 5C, 16C, & 3J  
Collet Fixtures**



**Manually-Actuated Quick-Grip™  
Collet Chucks for Manual Lathes**

[www.royalproducts.com](http://www.royalproducts.com)

Contact Your Select Royal Products Distributor: