



NEW - ROYAL Z-LOCK™

QUICK-CHANGE WORKHOLDING FOR ALL MACHINING CENTERS

- ✓ Precision Receiver Mounts to Your Machining Center T-slot Table or 5th-Axis Rotary Table
- ✓ Workpieces are Mounted Offline to Machinable Top Plates to Maximize Production
- ✓ Change Top Plates in Just Seconds with Amazing Repeatability
- ✓ The Royal Z-Lock™ Keeps Your Machining Centers Making Parts - and Profits!

Designed to overcome the limitations and high-cost of other zero-point workholding systems, the Royal Z-Lock™ is a simple, precise, and affordable quick-change system that offers unmatched clamping strength.



Simple Manual Actuation

A few turns of a hex key and it's locked – no risk of loosening from vibration, spring wear, or air/hydraulic failure. It's also a breeze to implement – no external lines to run so you'll be running parts more efficiently in no time!

Precision Repeatability

X -axis – 0.0001"
Y -axis – 0.0001"
Z -axis – 0.00005"

Extremely Powerful Clamping Force

Easily achieves up to 11,240lbs. (50kN) of clamping force – far greater than other systems (even those with a "turbo" feature). The hardened locking screw contains a large, sturdy engagement surface for failsafe operation.

Massive Locating Surface

Up to 50% greater surface area than other brands for superior stability and vibration dampening.

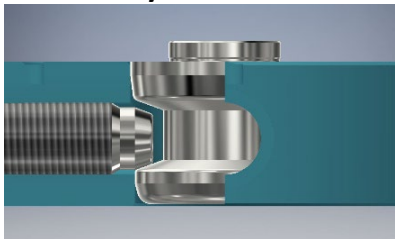
No "Machinist's Touch" Required When Changing Top Plates

All stud models have been optimized to eliminate binding, making top-plate changeovers a breeze.



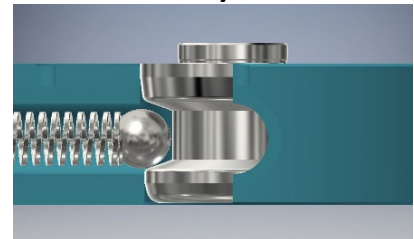
Simple Manual Actuation – no air or hydraulic lines to mess with.

Royal Z-Lock™



The heavy-duty clamping screw of the Royal Z-Lock™ rigidly and precisely engages the matching tapered groove in the stud, providing secure, consistent clamping force. Simple – yet powerful and reliable!

Other Systems



Other systems rely on spring-loaded balls to retain the stud. Over time, springs weaken, reducing the force they can apply to the balls. This can result in vibration and increased risk of the top plate disengaging under heavy machining loads.

Royal Z-Lock™

An Affordable Quick-Change Workholding System for All Machining Centers!

ROYAL Z-LOCK™ QUICK-CHANGE WORKHOLDING SYSTEM



Easy to Understand, Easy to Use, Easy to Order!



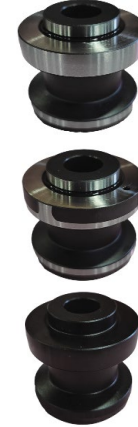
Receiver with Baseplate

- ✓ Available in single, dual, and quad configurations.
- ✓ Baseplates include multiple bolt-patterns optimized to accommodate all common T-slot patterns.
- ✓ Single receivers may be ordered without baseplates for tombstone and riser applications.



Top Plates

- ✓ Made of machinable aluminum to accommodate vises, collet fixtures, Mitee-Bite* clamps, etc. – the possibilities are limitless.
- ✓ All top plates include the appropriate studs pre-mounted and ready to go.
- ✓ 1" (26mm) thickness accommodates milled locating pockets up to 1/4" deep.



Studs

- ✓ Three stud types for single, dual, and quad setups.
- ✓ Hardened and ground to handle thousands of changeovers.
- ✓ Studs included with all top plates but available separately for customers who wish to use their own top plates, fixtures, or even screw them into your workpiece.

Not Sure What to Order? Here's a Popular Setup:



- ✓ 1 pc. Royal Z-Lock™ Dual Part Number 65002 (Includes two receivers mounted to baseplate)
- ✓ 2 pcs. Z-Lock™ Top Plate Dual Part Number 65022 (One plate gets loaded offline while the other plate is working inside your machining center)

Note: Studs included with top plates – no need to order separately.

Total Price = \$3,985

Royal Z-Lock™ Zero-Point Workholding Systems

Description	Part Number	Price
Z-Lock™ Single (one receiver mounted to baseplate)	65001	\$1,445
Z-Lock™ Dual (two receivers mounted to baseplate)	65002	2,495
Z-Lock™ Quad (four receivers mounted to baseplate)	65004	4,795
Z-Lock™ Top Plate Single (includes one positioning stud and two keys)	65021	470
Z-Lock™ Top Plate Dual (includes one positioning stud and one orienting stud)	65022	745
Z-Lock Top Plate Quad (includes one positioning stud, one orienting stud, and two clamping studs)	65024	1,445
Z-Lock Receiver Only (no baseplate)	65000	765

Note – due to the wide variety of T-slot configurations, baseplate mounting bolts and T-nuts are not included.

* Mitee-Bite is a registered trademark of Mitee-Bite Corporation.

www.royalproducts.com